

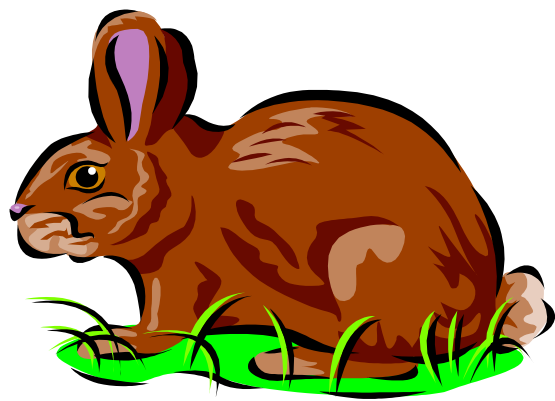
Alfabeto Tz'utujil

Santiago Atitlán



a b ch ch'
d e i j k
k' l m n o
p q q' r s
t tz tz' u
w x y ,

Vocales



amul

A a



etz'bal

E e



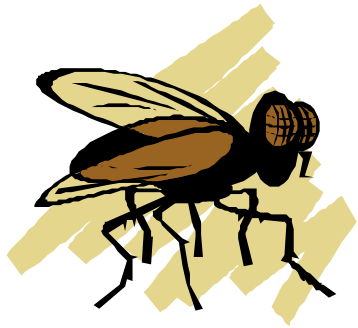
ik

I i



om

O o



us

U u

Consonantes Sencillas



Bjo'y

B b



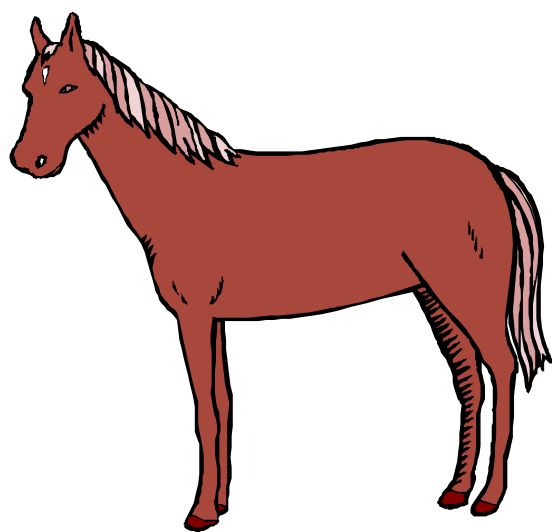
dod

D d



jal

J j



kej

K k



laq

L l



msat

M m



nixti'

N n



pich'

P p



qul

Q q



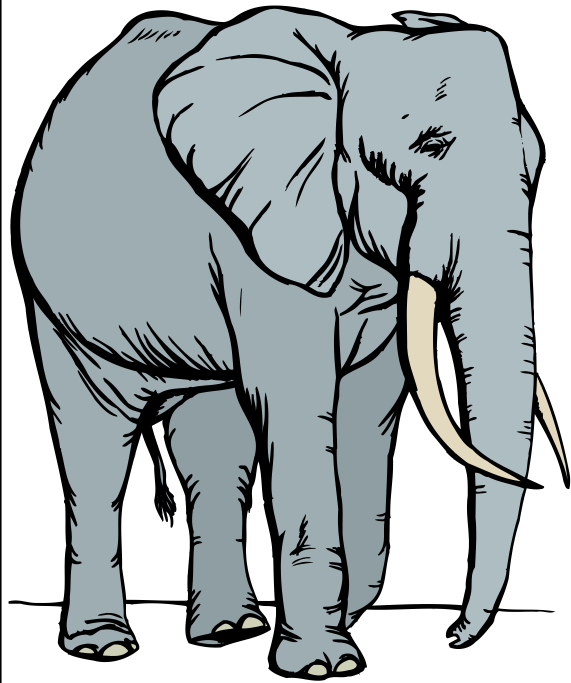
rex

R r



snik

S s



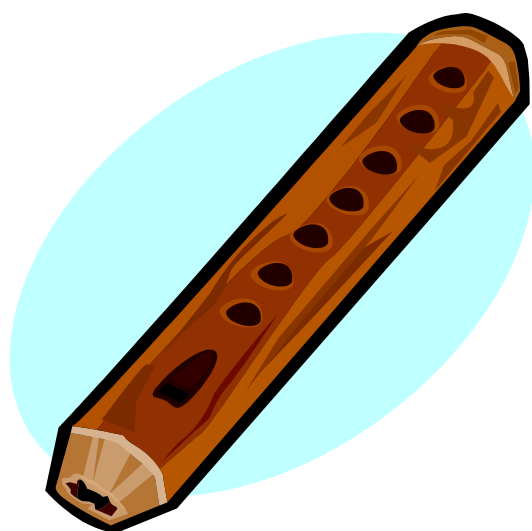
tix

T t



wnen

W w



xul

X x



Ya'l

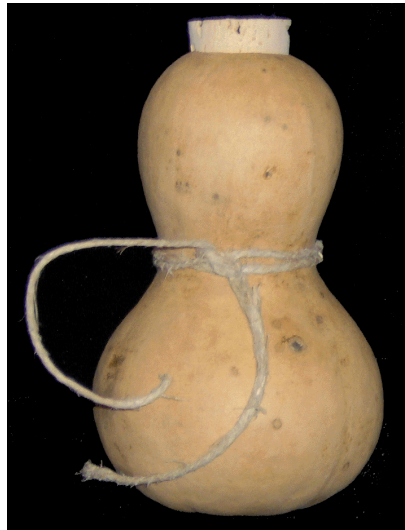
Y y

***Consonantes
Compuestas
Simples***



che'

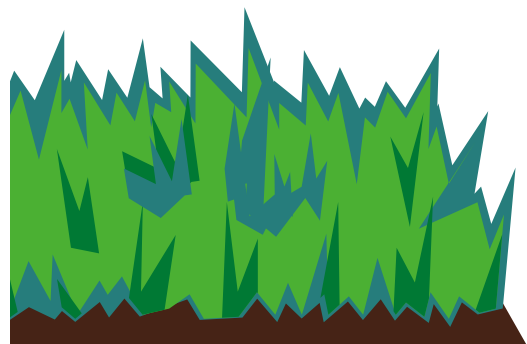
Ch ch



Tzu'y

Tz tz

***Consonantes
Sencillas
Glotalizadas***



k'im

K' k'



q'aq'

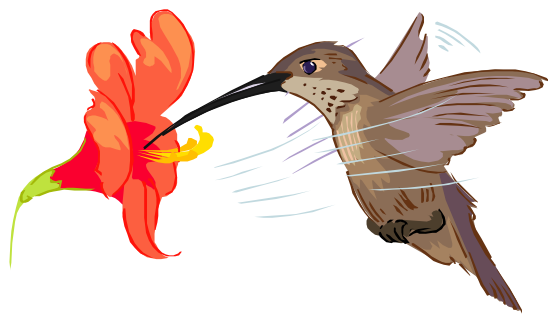
Q' q'

***Consonantes
Compuestas
Glotalizadas***



ch'oy

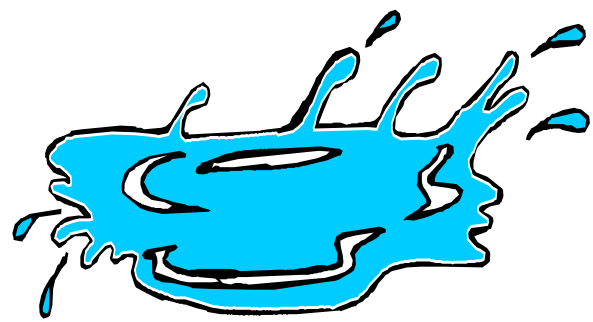
Ch' ch'



tz'nun

Tz' tz'

Glotal



ya'

,